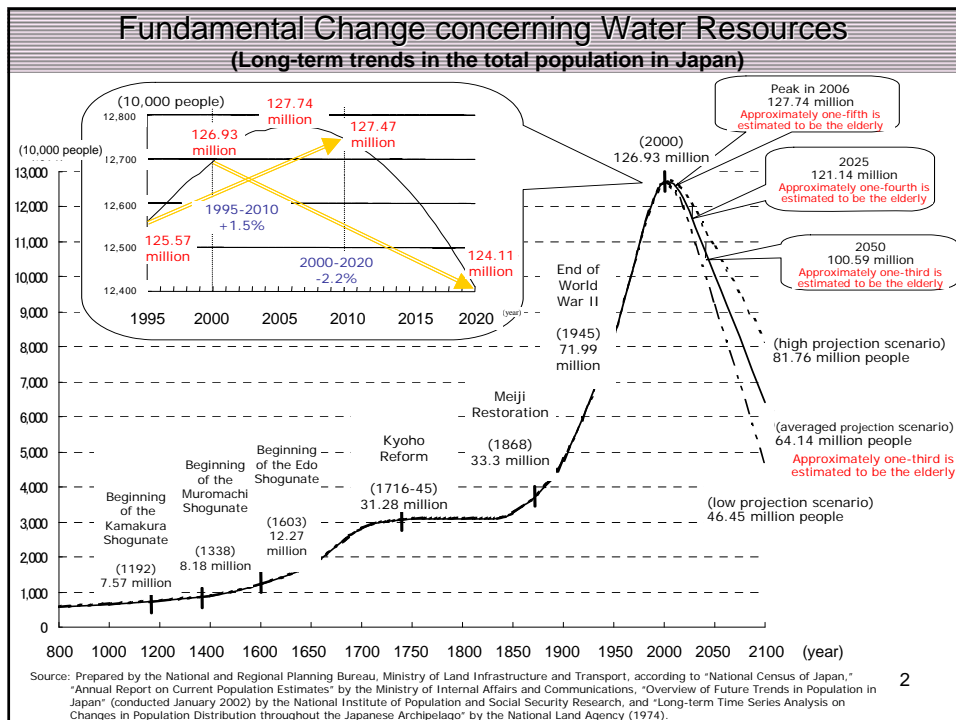


Climate Change in Japan and Efforts concerning Water Resources

Aug. 7, 2007

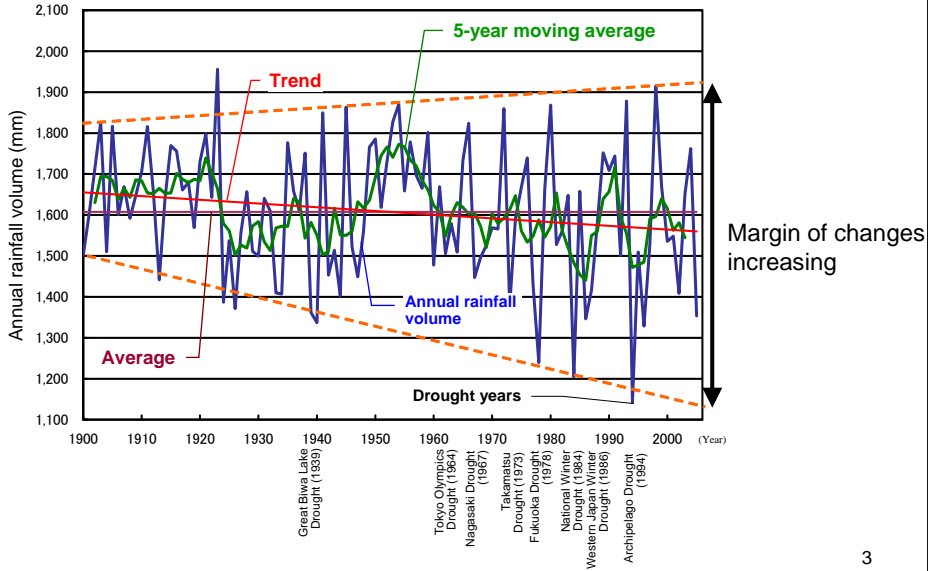
Michio TANAHASHI

Director General, Water Resources Department, Land and Water Bureau,
Ministry of Land, Infrastructure and Transport



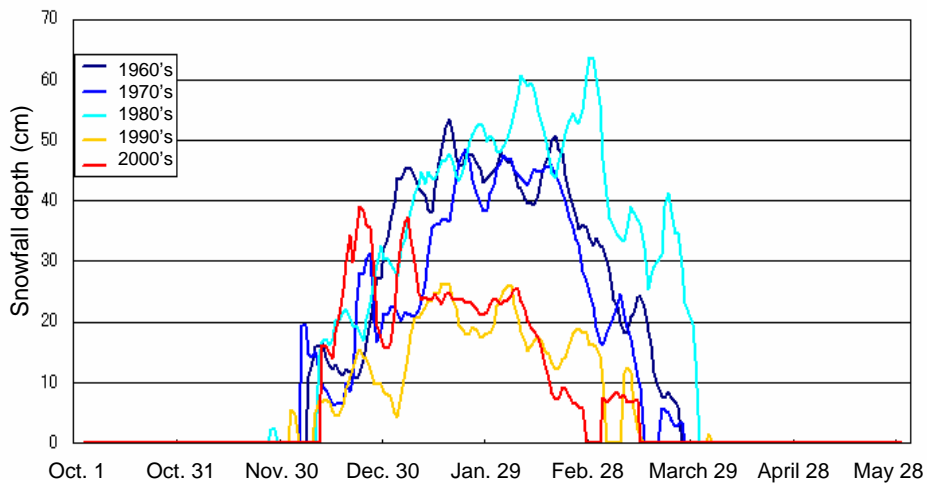
Climate Change (notable characteristics of rainfall in recent years)

Annual changes in rainfall volume in Japan (1900-2005)



3

Climate Change (change in snowfall volume in recent years)

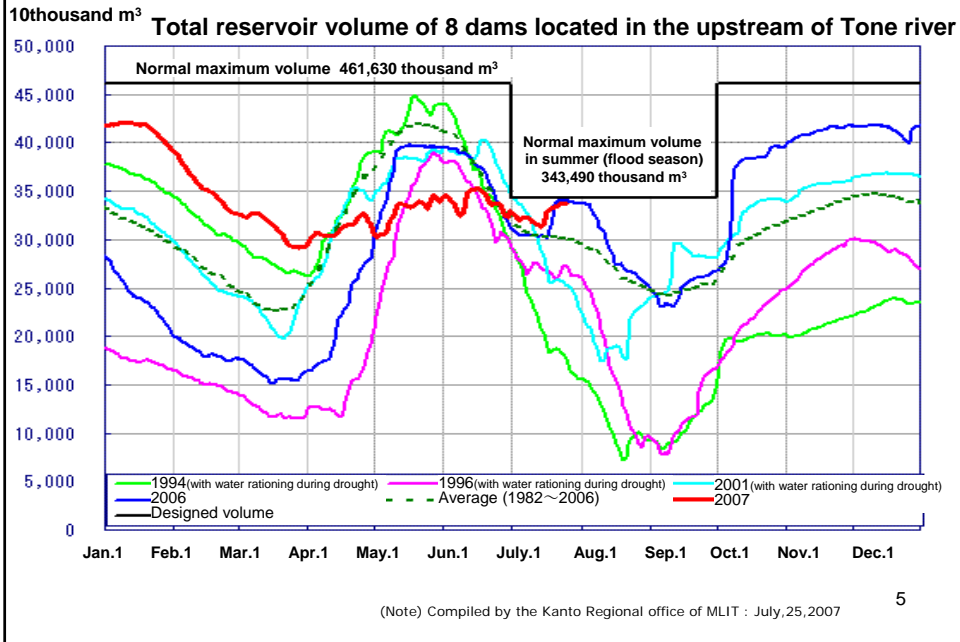


Changes in snowfall depth in Toyama (Toyama City)

4

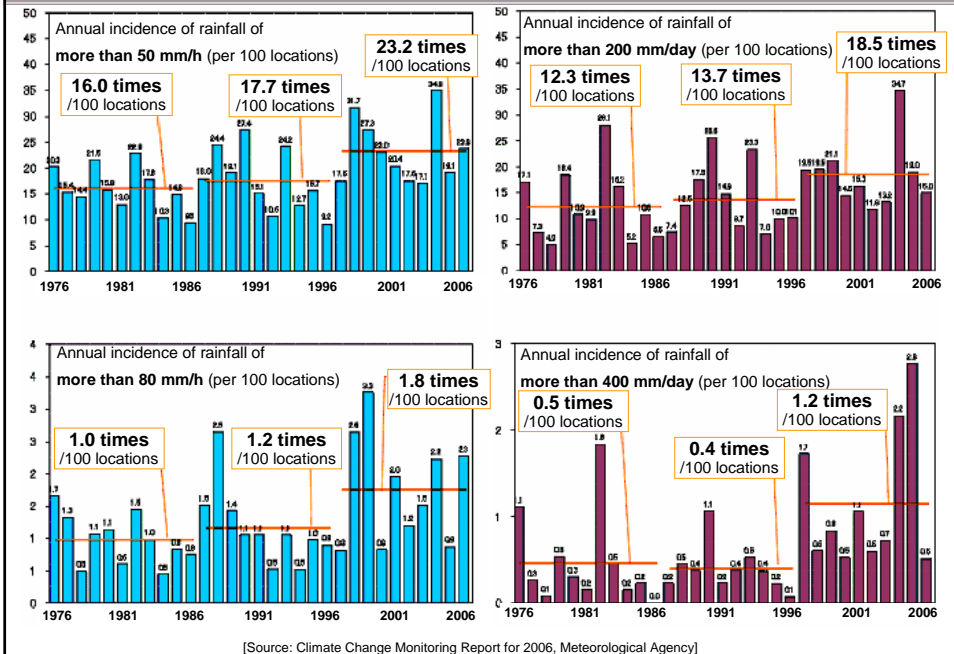
(Note) Compiled by the Water Resources Department of MLIT based on observation data collected by the Meteorological Agency.

Climate Change (Influence of decrease of snowfall on water resource)



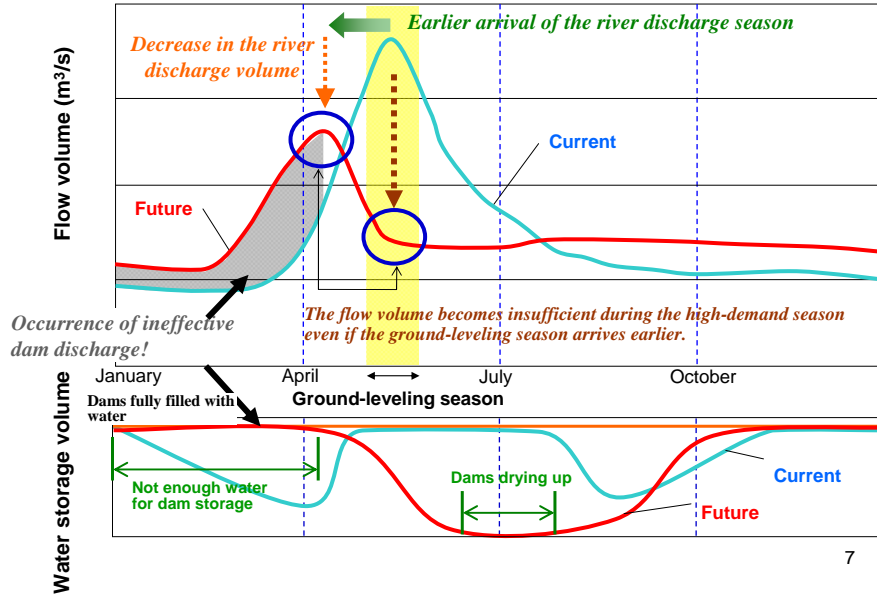
5

Climate Change (change in the incidence of short torrential rain and heavy rain)



Forecast of Climate Change (change in river water volume (graph))

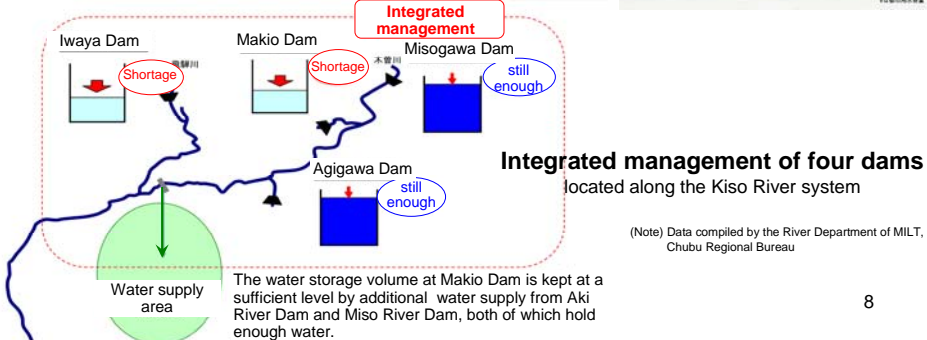
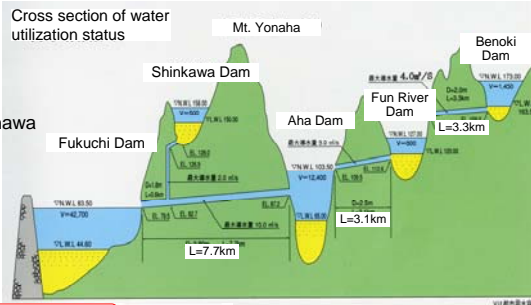
River discharge volume of 100 years later (simulation)



Approach to adaptation (use of existing stocks)

Collaboration of dams in northern Okinawa

(Note) Outline of "Dam of Yanbaru" drafted by the North Dam Integrated Control Office of the Cabinet Office's Okinawa General Bureau.

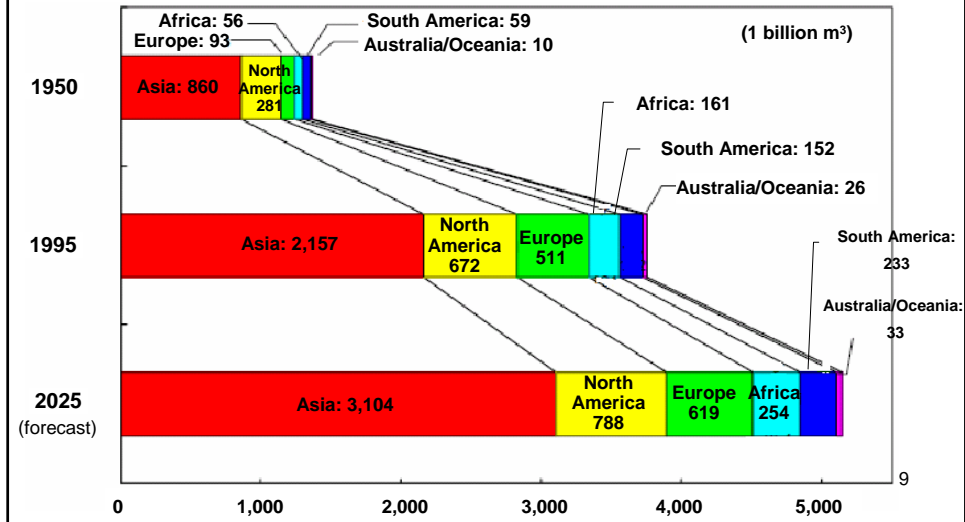


Forecast of global water demand

The global population exceeded 6 billion in 2000 and is expected to reach 8 billion in 2025.

Water demand, which amounted to 1,369km³ in 1950 and 3,752km³ in 1995, is expected to rise sharply to 5,139 km³ in 2025.

Source: World Water Resources at the Beginning of the 21st century, UNESCO, 2003



Thank you